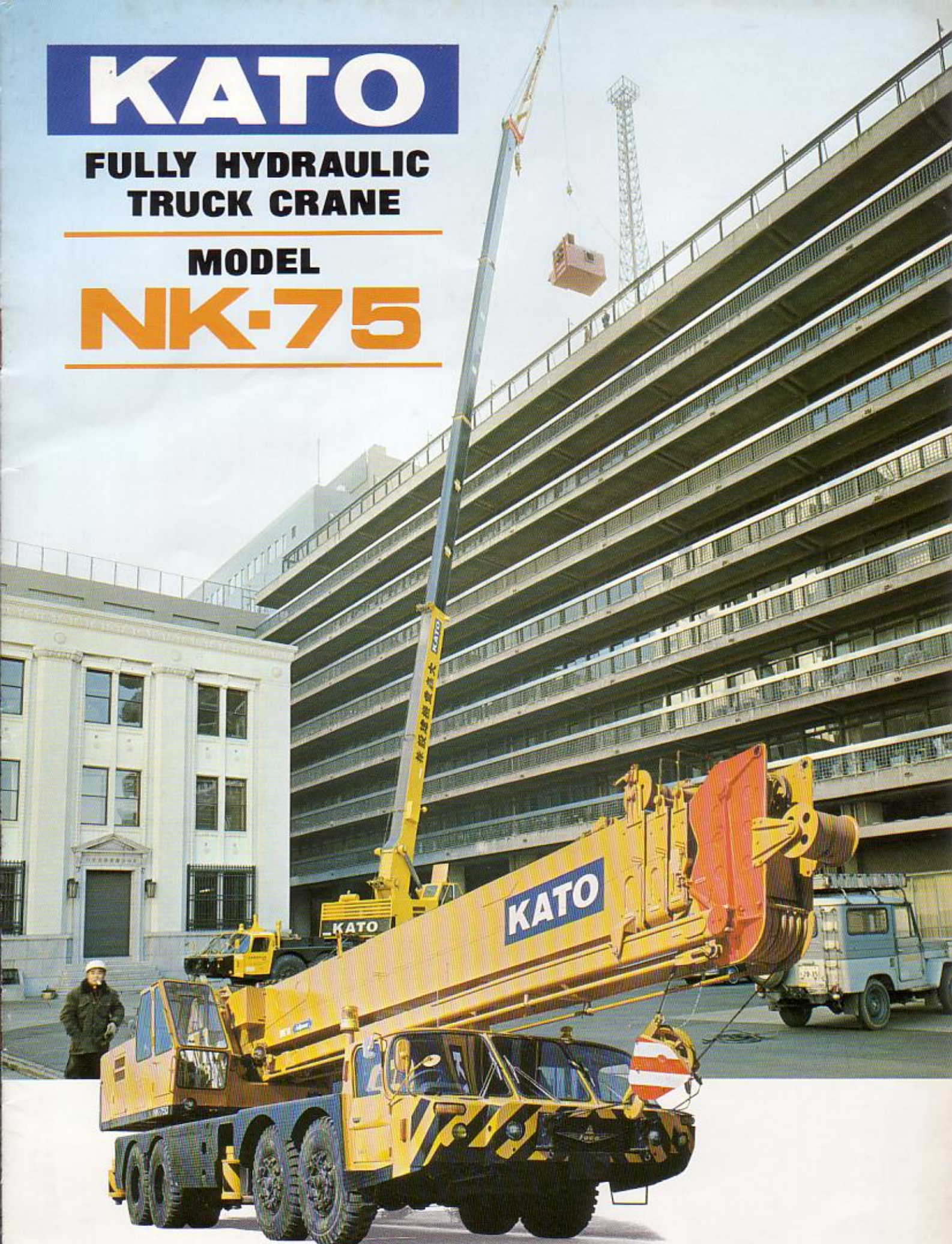


KATO

**FULLY HYDRAULIC
TRUCK CRANE**

MODEL

NK-75



**KATO WORKS CO., LTD.
TOKYO**

HERE'S BIG OUTPUT FROM JUMBO LIFTCRANE

KATO NK-75

**FULLY HYDRAULIC
TRUCK CRANE**

RATED CAPACITY.....75,000kg

MAX. BOOM LENGTH (INCL. JIB).....58m
(MAIN BOOM + JIB BOOM)
43m 15m

MAX. LIFT HEIGHT.....59m

Time-proven exclusive features of the broad KATO line of materials handling equipments and construction machines have been combined in this all-new, world's biggest **KATO Hydraulic Truck Crane Model NK-75**. It is designed to give you unsurpassed performance....performance that will give you higher production and lower maintenance costs for a far greater profit on any type of extra-heavy lifts.



FEATURES THAT MAKE THE KATO NK-75 A BETTER INVESTMENT FOR EVERY OWNER

**EXTRA-HEAVY LIFTS AT ALL
RADII GREATER STABILITY!**



UPPER MACHINERY

• DIESEL ENGINES

200 and 330 net horsepower diesel engines for crane and carrier give smooth power flow with less fuel consumption.

• POWER LOAD LOWERING DEVICE

Power load lowering device provides high and low speeds to permit smooth, safe lowering of load for precise pay-out control.

• BOOM AND JIB EXTENSION

Boom made in four sections and jib extension are all-welded, low-stress steel frames of full box construction. They are hydraulically extended and retracted by means of three control levers ... independently of other functions.

• OUTRIGGERS

Four outriggers, two on each side of carrier chassis, provide added stability for swinging capacity loads on rough ground.

• FOLDING JIB EXTENSION

Jib extension is folded underneath the boom for moves between jobs. It can readily be set to working position by means of a pin.

• OPERATOR'S CAB

Cut-back front of the cab permits the operator to see every inch of the boom every minute. All windows use shatter-proof safety glass. All controls are conveniently grouped within easy reach of the operator. Contour seat is comfortably padded for maximum body support all day long.

• BOOM OVERHOIST ALARM DEVICE

Boom overhoist alarm device prevents the unit from tipping, as is often possible when the boom is overhoisted.

■ MAX. ALLOWABLE LOADS

UNIT: ton

Working radius (m)	13-meter boom	20-meter boom	27-meter boom	33-meter boom	43-meter boom
	Over side and over rear	Over side and over rear	Over side and over rear	Over side and over rear	Over side and over rear
3.5	75.0	42.0			
4.0	64.0	42.0			
4.5	56.0	38.3	30.0		
5.0	48.0	35.0	30.0		
5.5	42.0	32.4	27.3	20.0	
6.0	38.0	29.7	25.3	20.0	
6.5	34.8	27.4	23.5	19.0	
7.0	32.0	25.3	22.0	17.7	
8.0	27.0	22.0	19.2	16.0	11.0
9.0	23.4	19.0	16.8	14.4	11.0
10.0	20.0	16.8	15.0	13.0	11.0
10.5	18.2	15.7	14.0	12.2	10.5
11.0		14.6	13.2	11.7	10.0
12.0		12.9	11.8	10.5	9.3
14.0		10.0	9.3	8.5	7.9
16.0		7.5	7.2	6.7	6.6
17.0		6.5	6.3	6.0	6.0
18.0			5.5	5.3	5.5
20.0			4.2	4.0	4.6
22.0			3.0	2.9	3.7
23.0			2.5	2.4	3.3
24.0				2.0	2.9
26.0				1.3	2.2
27.0				0.9	1.9
28.0					1.6
30.0					1.1
31.0					0.8

■ MAX. ALLOWABLE LOADS FOR JIB EXTENSION

UNIT: ton

Main boom angle (deg.)	10.2 meter jib offset angle: 5°	15-meter jib offset angle: 5°
	With outriggers Over side and over rear	With outriggers Over side and over rear
82	6.0	3.0
80	5.7	3.0
78	4.9	2.6
76	4.3	2.3
74	3.7	2.0
72	3.2	1.7
70	2.8	1.5
67	2.2	1.2
64	1.6	1.0
60	1.0	0.7
56	0.7	0.5

■ NOTES

- Max. allowable loads shown above are the guaranteed values with the machine on firm level ground and include the weight of hook. They are based on the use of outriggers fully extended, without using the jib extension. The working radii are the actual values including the deflection of the boom and, hence, it is dangerous to exceed these radii.

Weights of Hooks

Hook	75-ton hook	45-ton hook	26-ton hook	13-ton hook	6-ton hook
Weight(kg)	700	400	300	230	150

- When extending or retracting, or raising or lowering the boom, or when swinging the machine, be sure to use the outriggers.
- When using the main boom, do not exceed 31 meter radius.
- When using the 2nd and 3rd booms, manipulate the levers in such a manner as to extend or retract them equally. Do not work with any one of these booms extended and the other retracted.
- When using the 4th boom, extend the boom up to 43 meters.
- When the boom length exceeds the specified value, the max. allowable load must not exceed the value specified

for the next longer boom. This does not apply when the boom length exceeds 33 meters.

- When using the main hook with the jib extension set at position, deduct 2,500 kg from the max. allowable loads shown above. When the jib extension is folded in position, deduct the weights shown below from the max. allowable loads:

Boom	13-meter boom	20-meter boom	27-meter boom	33-meter boom	43-meter boom
Weight (kg)	500	400	300	200	100

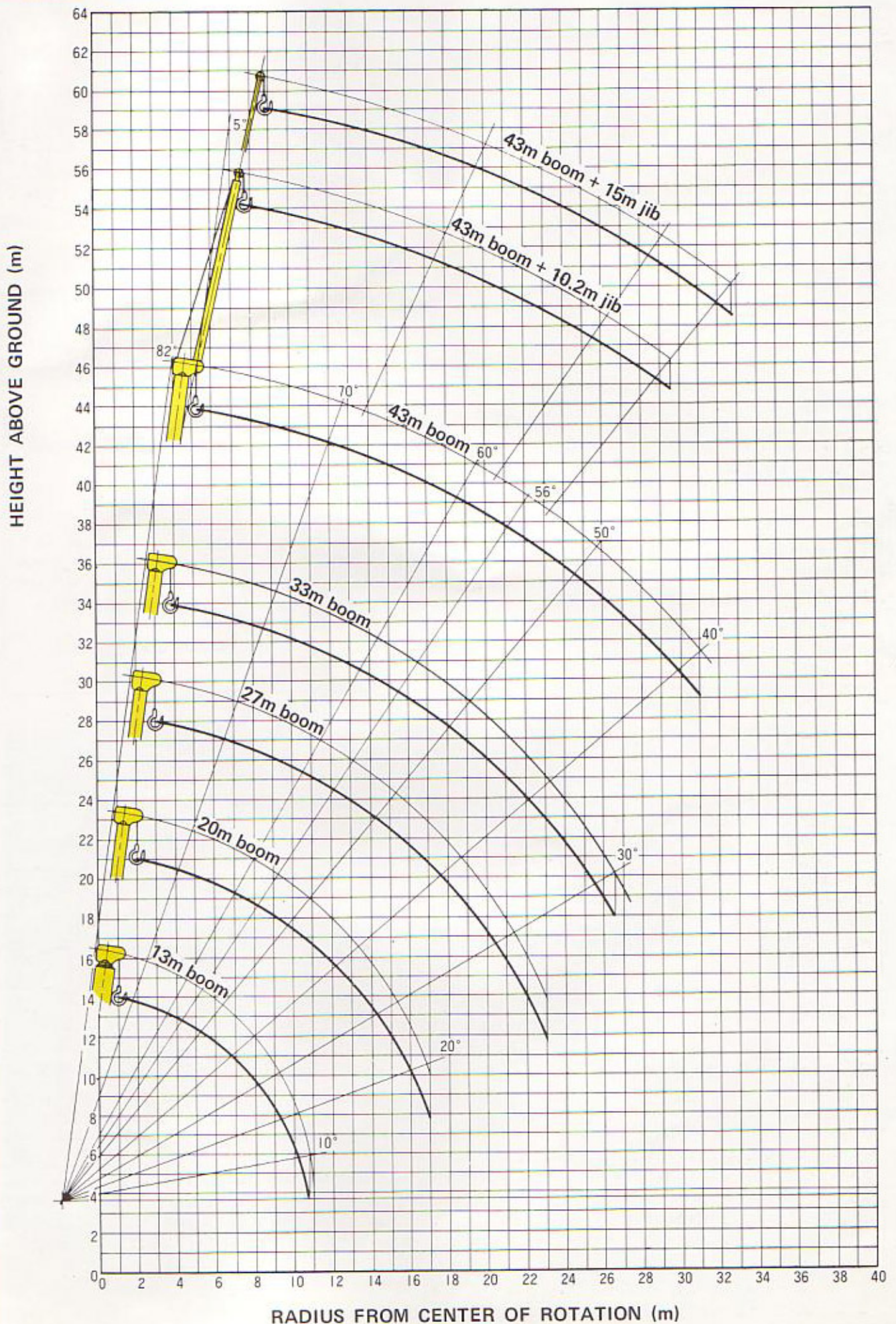
- Do not lower the boom below 40° when it is fully extended, or below 55° when the jib extension is used.
- The number of parts of rope recommended for the respective boom lengths are as follows:

Boom length(m)	13	13~20	20~27	27~33	43
No. of parts of rope	12	7	5	4	2

- Determination of the minimum number of parts of rope must be based on the fact that 6,250 kg load is applied to each rope during operation.
- Any claim due to a failure to work within the max. allowable loads will not be accepted.

CRANE RANGE

(The values shown below do not include deflection of boom.)



CRANE SPECIFICATIONS

Model KATO NK-75

Performance

Capacities	75t x 3.5m	13m boom
	11t x 10.0m	43m boom
	With outriggers, over side and over rear	
Boom lengths	13m (standard boom) 43m (maximum boom)	
Jib length	10.2~15m (adjustable in two steps)	
Hoist rope speeds	Main and auxiliary drums	
	High speed	50m/min.
	Low speed	25m/min.
	(w/power load lowering device)	
Heights above ground	43.8m	
	59m (w/15m jib)	
Swing speed	1.5 rpm	
Travel speed	57 km/h	
Propell system	8 x 4	
Minimum turning radius	12m	
Gradeability	0.271 (sin θ)	

Dimensions

Overall length	15,210mm
Overall width	3,400mm
Overall height	3,980mm

Hydraulic system

No. of oil pumps	4
No. of hoist motors	1
No. of swing motors	1
Control valve	Multiple-spool type, automatic-manual
Cylinder x no.	Double-acting x 13
Hydraulic tank capacity	1,300 liters

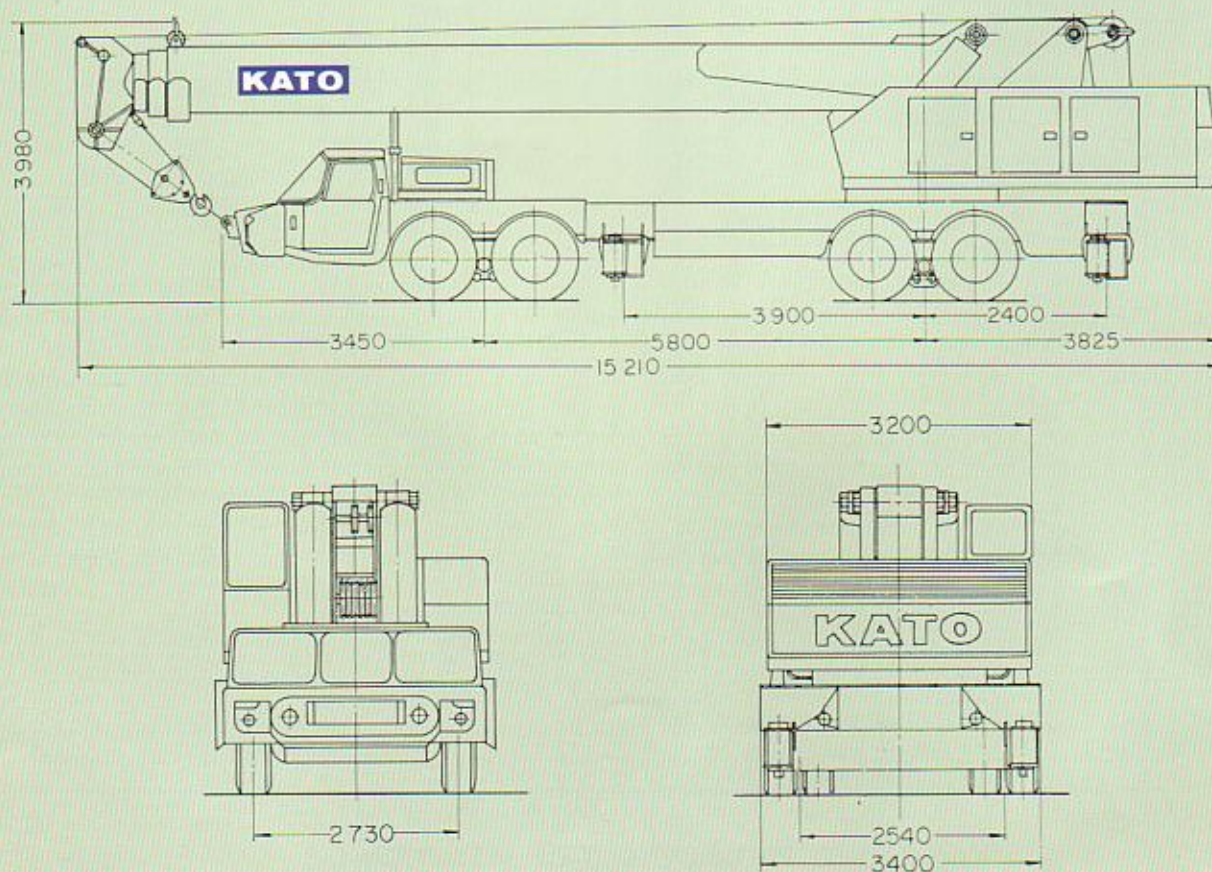
Prime movers

Crane	
Model	Mitsubishi 8DC20C
Type	Water-cooled, 4-stroke cycle, V, 8-cylinder diesel
Maximum output	200 HP/2,000 rpm
Continuous rated output	170 HP/2,000 rpm
Carrier	
Model	Mitsubishi 8DC2-T
Type	Water-cooled, 4-stroke cycle, V, 8-cylinder diesel
Maximum output	330 HP/2,300 rpm

Safety devices

Overhoist alarm device, drum tacho meter, drum lock device, boom angle indicator, outrigger locking device, oil pressure safety valve.

• These specifications are subject to change without notice.





KATO

KATO WORKS CO.,LTD.