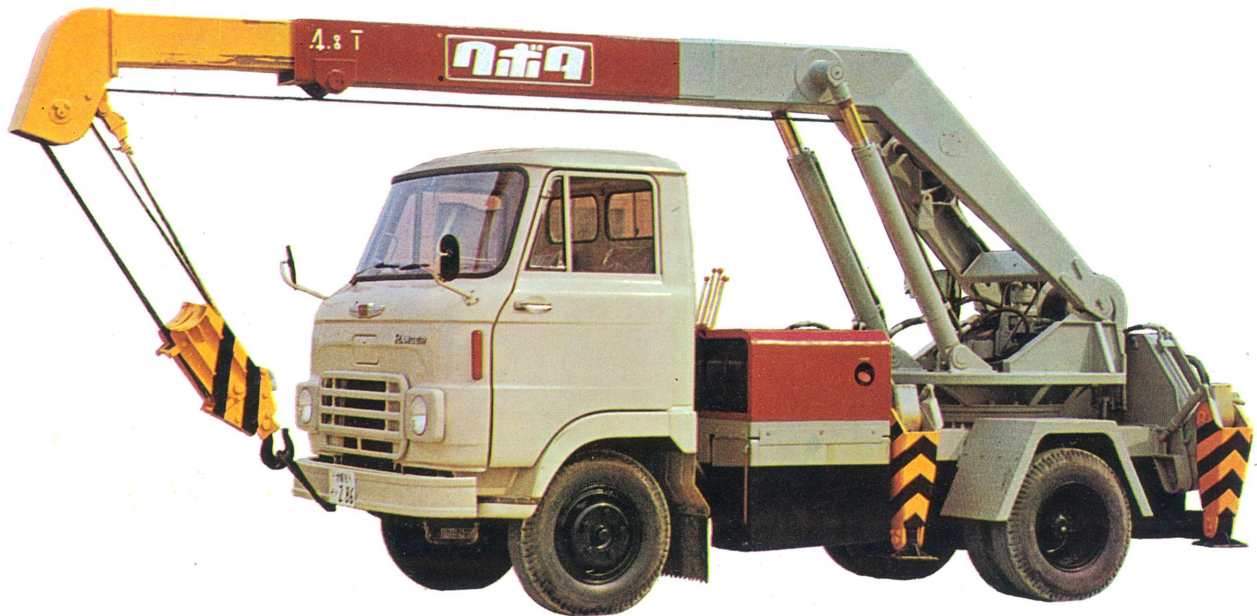


KUBOTA TRUCK CRANE

MODEL **KTC36** (Full Hydraulic Driven)

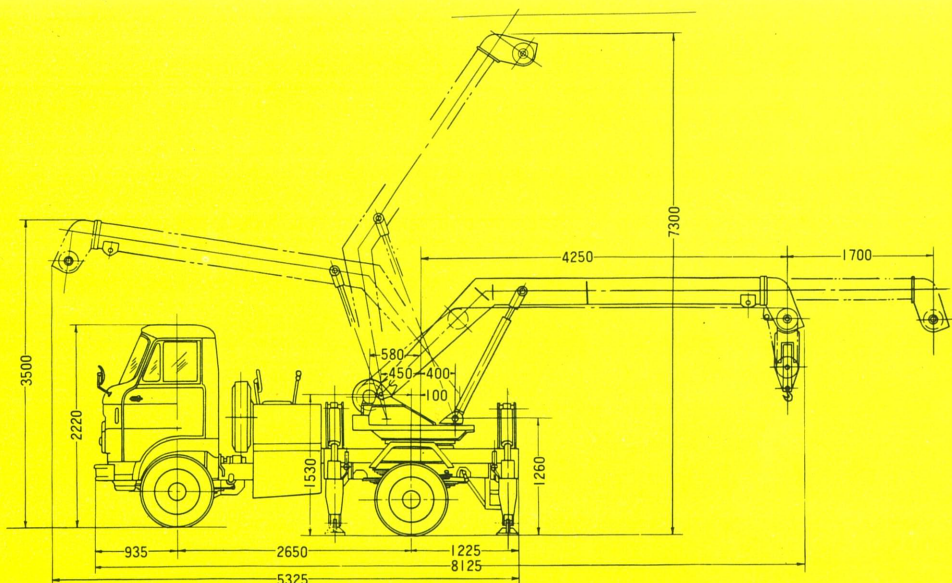
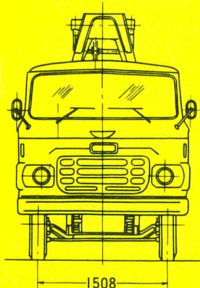
A NEW TYPE TRUCK CRANE

SMALL BUT POWERFUL TRUCK OF ECONOMY



Use it in order to rationalize loading operation.

- * Loading and unloading of truck and freight car.
- * Construction of building and frameworks of steel structure.
- * Salvage of car in trouble. Setting up electric pole, laying down cable and installing transformer.
- * Loading, unloading and tidying of materials on the spot for ground work, building and subway.
- * Transportation of materials with in factory and warehouse.
- * Transportation of lumber. Cargo handling on the pier.



**Special Features of KUBOTA TRUCK
CRANE KTC-36**
(Full Hydraulic Driven)

1. Compactness

4.8t lift crane is well mounted on 3.5t truck chassis. It is of transister type, i.e., small but capable.

2. One Touch

Operation of outriggers is by hydraulic pressure and can be done separately for the front and the rear. Also, outriggers can be extended in one motion. So, very efficient.

3. Central Control System

Crane operation lever and outrigger control lever are situated around the driver's seat. So, operations are easy.

4. 360° Slewing

There is no limit to slewing movement, resulting in high efficiency work. Coupled with extension and contraction of boom, the scope of operation is widened.

5. High Mobility

Travelling speed is 95 km/hr and it can run on the highway. It can be used effectively even in a narrow space. So, it serves to rationalize cargo handling.

6. Special Hydraulic System

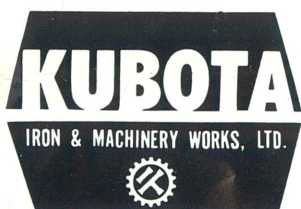
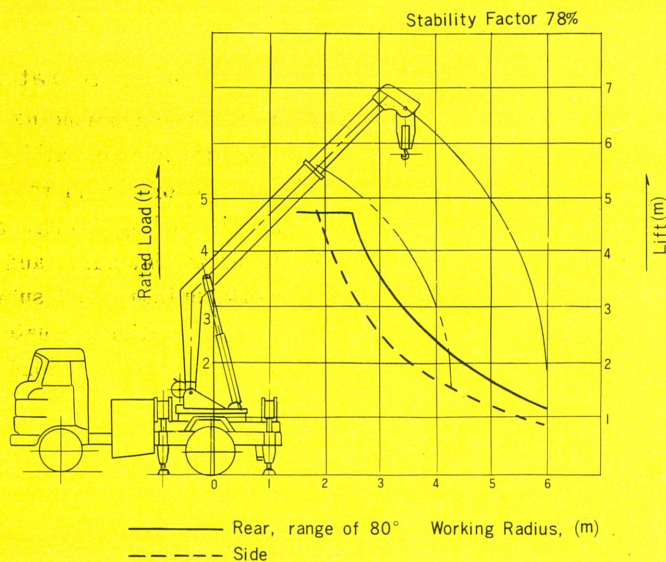
It is simple in construction, easy and safe to handle and very durable.



Specifications

Crane Capacity	4.8 ton × 2.5 m w/outriggers for ranger of 80°, rear
Rope speed	Hoisting : 40m/min Lowering : 40m/min
Slewing Speed	2 r. p. m. 360° full slewing
Max. Turning Radius	5.2m
Gradeability (sin θ)	0.274 (16°)
Travelling Speed	High, 95.0 km/hr Forward, 4 speeds Reverse, 1 speed
Weight, total	6,940 kg
Dimensions (when travelling)	Length, overall: 5,565 mm Width, " : 1,990 mm Height " : 2,870 mm
Chassis	Hino Ranger, KM-320 Engine: water-cooled, 4 cycle, vertical, 6 cylinder Max. Output: 90 ps/3,200 r. p. m.

PERFORMANCE CURVE



F 6326 ① 41.4.1 天

Head Office : 22, Funade-cho 2-chome, Naniwa-ku, Osaka, Japan.
Tokyo Branch : 6, Nihonbashi-Edobashi 3-chome, Chuo-ku, Tokyo, Japan.
Cable Address: IRONKUBOTA OSAKA or TOKYO.