



TADANO

HYDRAULIC TRUCK LOADER CRANES

CARGO CRANE

ZR230 series

ZR233/232



photo: "Hook In" system type

NEW

The new Cargo Crane ZR from Tadano with a response like an extension of the operator's thoughts

We proudly announce the addition of the Cargo Crane ZR series to the current ZF series — cranes that are safer and easier to use, yet strong, sensitive and flexible.

In addition to the standard specifications, the ZR230 series offer special features such as "Hook In" system. You can select the most suitable Cargo Crane ZR model to meet your goals and application.

Automatic swing lock

Locks the boom in place when the truck is being driven for greater safety.

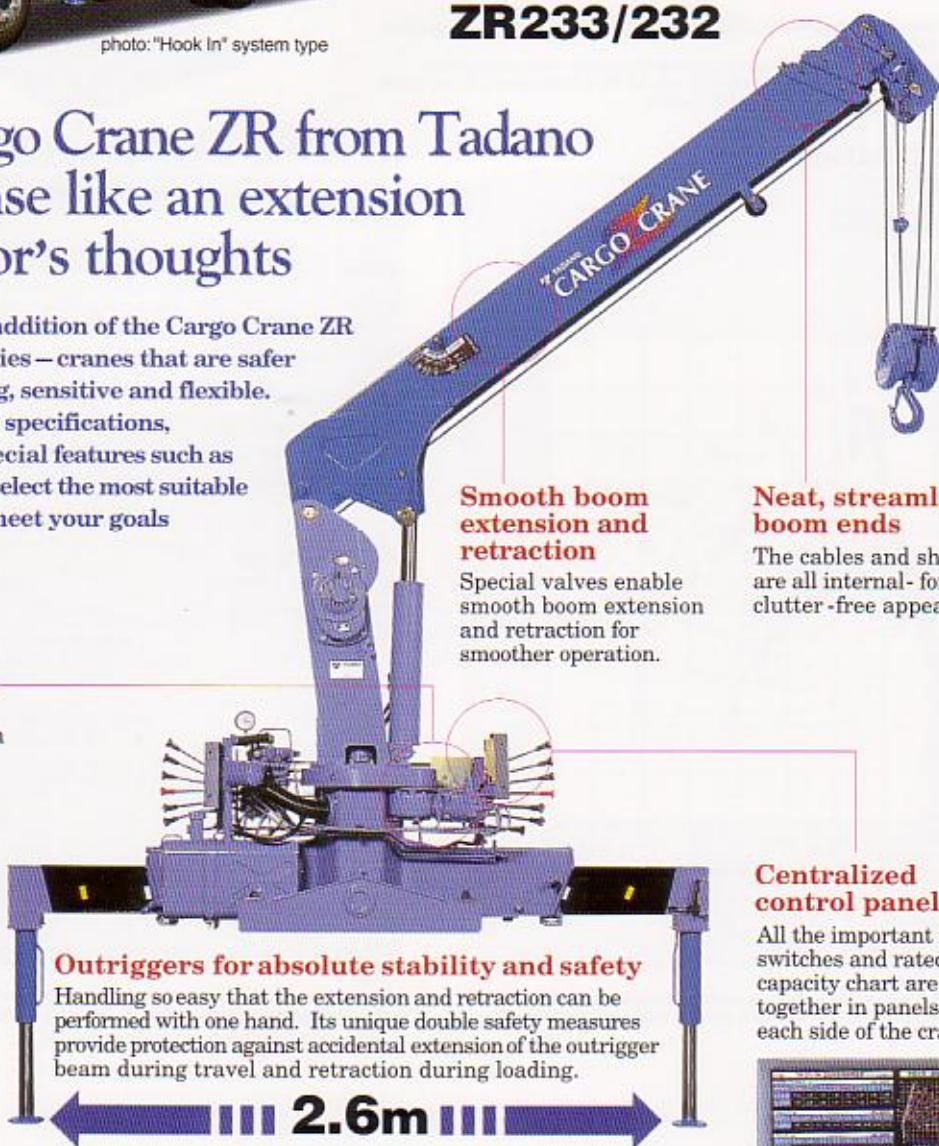


Smooth boom extension and retraction

Special valves enable smooth boom extension and retraction for smoother operation.

Neat, streamlined boom ends

The cables and sheaves are all internal - for a clean, clutter-free appearance.



Outriggers for absolute stability and safety

Handling so easy that the extension and retraction can be performed with one hand. Its unique double safety measures provide protection against accidental extension of the outrigger beam during travel and retraction during loading.

Centralized control panels

All the important function switches and rated lifting capacity chart are grouped together in panels - one on each side of the crane.



ADVANCED EQUIPMENT

The ZR230 series feature the "Hook-In" system to further enhance work efficiency.

Sure proof of Tadano's leading position in the cargo handling industry can be seen in the development of its innovative "Hook-In" system. A pull of a lever and the crane hook is stowed automatically. No more manual belaying.



ZR230 series

RATED LIFTING CAPACITIES

TM-ZR232

2.51m / 4.4m boom

Load Radius (m)	1.7 ^{and over}	2.0	2.5	3.0	3.5	4.0	4.2
Rated Lifting Capacity (kg)	2,330	2,030	1,530	1,280	1,080	960	930

TM-ZR233

2.65m / 4.52m boom

Load Radius (m)	1.7 ^{and over}	2.0	2.5	3.0	3.5	4.0	4.32
Rated Lifting Capacity (kg)	2,330	2,030	1,530	1,280	1,080	960	880

7.1m boom

Load Radius (m)	3.0 ^{and over}	3.5	4.0	4.5	5.0	5.5	6.2
Rated Lifting Capacity (kg)	1,230	1,030	880	780	680	630	530

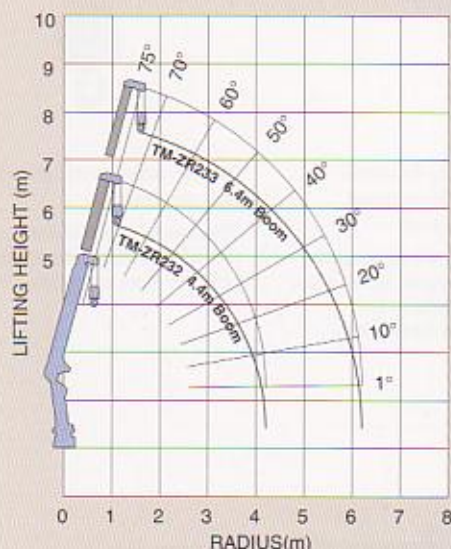
NOTE:

- The mass of hook (30kg), slings and all similarly used load handling devices must be added to the mass of the load.
- The above numerical values of rated lifting capacities are based on crane strength only. The rated lifting capacities based on stability may lower than those in the above table depending on the loading conditions and the types of the chassis.



WORKING RANGE

TM-ZR232/233



NOTE:

Lifting heights and boom angles are based on a straight (unladen) boom, and allowance should be made for boom deflection obtained under laden conditions.

TECHNICAL SPECIFICATIONS

MODEL	TM-ZR232	TM-ZR233
CRANE CAPACITY	2,330kg at 1.7m (4-part lines)	
BOOM	Fully hydraulic telescoping boom of pentagonal box construction.	
Type	Fully hydraulic telescoping boom of pentagonal box construction.	Fully powered partly synchronized telescoping boom of pentagonal box construction.
Sections	2	3
Length	2.51m - 4.4m	2.65m - 6.4m
Extending Speed	1.89m / 7.5s	3.75m / 10.5s
Elevation Range/Speed	1° to 75° / 6.5s	
Max. Hook Height*	5.6m*	7.5m*
Max. Load Radius*	Approx. 4.2m*	Approx. 6.2m*
WINCH	Hydraulic motor driven Spur gear speed reduction, provided with mechanical brake.	
Max. Single Line Pull	5.74 kN (585kgf)	
Max. Single Line Speed	80m / min. (at 4th layer)	
Wire rope (Diameter x length)	8mm x 34m	8mm x 45m
SWING	Hydraulic motor driven. Worm gear speed reduction. Continuous 360° full circle swing on ball bearing slew ring. Automatic swing lock.	
Speed	2.5 min ⁻¹ (rpm)	
OUTRIGGERS	Manually extended sliders and hydraulically extended jacks. Integral with crane frame. Power up and down.	
Extended Width	Max.: 2.6m Mid.: 2.1m Min.: 1.535m (Wide type Min.: 1.71m)	
HYDRAULIC SYSTEM	Single gear pump	
Pump	Multiple control valves with integral safety valve	
Control Valves	Multiple control valves with integral safety valve	
STANDARD SAFETY EQUIPMENT	<ul style="list-style-type: none"> ● Load meter ● Load indicator ● Over-winding alarm ● P.T.O. indicator lamp ● Hook safety latch ● Level gauge ● Hydraulic safety valves, check valves and holding valves 	
SUITABLE TRUCKS	Gross vehicle mass - 4,000 to 6,000kg (Wide type: 4,000 to 8,000kg)	

NOTE:

- Operating speeds of the crane are guaranteed under the condition that the pump delivery is 45ℓ / min.
- *No allowance made for boom deflection under laden conditions.
- *Wide type" suitable for a large-sized truck of its class.

※ Specifications are subject to change without notice.



TADANO LTD.

(International Headquarters)

4-12, Kamezawa 2-chome, Sumida-ku,
Tokyo 130-0014, Japan
Tel: 81-3-3621-7752 Fax: 81-3-3621-7785

<http://www.tadano.co.jp/indexe.htm>
E-mail: tanihq@tadano.co.jp